

# CLARIFIX® CRYOTHERAPY



## What to expect

### Before treatment

- Discuss all medications with us, including anticoagulants and blood thinners.
- Discuss your medical history with us, including known blood clotting disorders, allergies to anesthetics or sensitivities to cold.
- Take recommended analgesics, if any.
- Plan for a one-hour appointment.

### During treatment

- Your nasal cavity is numbed with anesthetic.
- The ClariFix device and an endoscope are placed in the back of your nose, where the out-of-balance nerves are located.
- Cold therapy is applied for ~30 seconds, one to two times per side.

### You may experience any of the following:

- Slight pressure.
- Cooling sensation in your nose and/or around your molars.
- Some discomfort, though treatment should not be painful.

### After treatment

- You may experience transient pain or discomfort, including headache which typically resolves in a matter of hours.
- Treatment related discomfort typically resolves within 24 hours.
- Most patients return to normal activity the same day.
- You may experience temporary increased congestion which may last a few days.
- Most patients begin to see improvement between two and six weeks post-treatment.

### Post-care instructions may include:

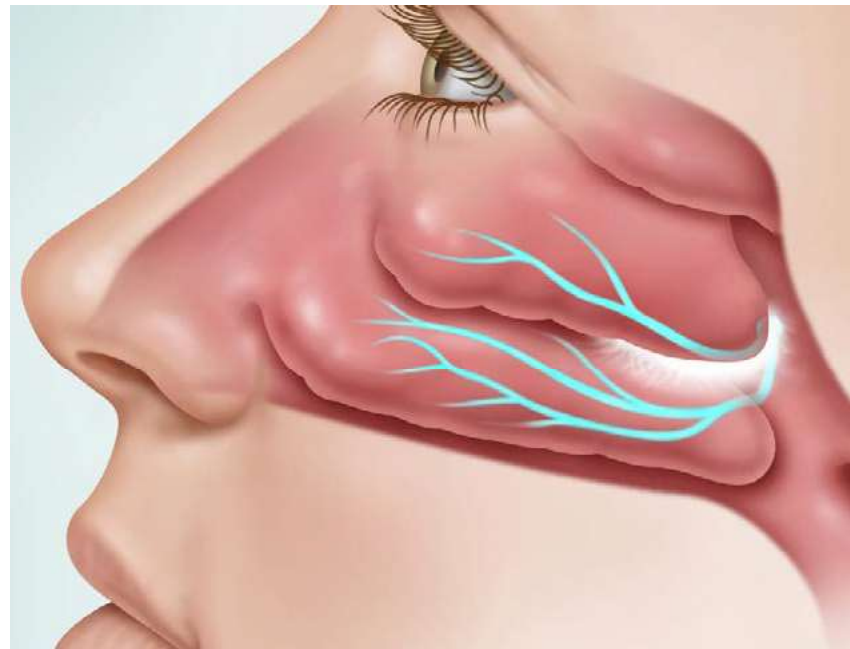
- A hot beverage just before and after treatment.
- Over-the-counter analgesics.
- Nasal saline irrigation.
- Avoid blowing your nose for the first week.

### Your ClariFix cryotherapy is scheduled:

Patient: \_\_\_\_\_

Date: \_\_\_\_ / \_\_\_\_ / \_\_\_\_

Time: \_\_\_\_ : \_\_\_\_ OAM OPM





## ClariFix.com

**ClariFix device Indications for Use:** The ClariFix device is intended to be used as a cryosurgical tool for the destruction of unwanted tissue during surgical procedures, including in adults with chronic rhinitis.

Contraindications include cryoglobulinemia, paroxysmal cold hemoglobinuria, cold urticaria, Raynaud's disease, open and/or infected wounds or other skin conditions at or near the target tissue. Treat with caution: Patients with diabetes, sensitivity to cold, neuropathic disorders, bleeding disorders, or impaired peripheral circulation in the area to be treated.

Adverse events were those usually associated with post-cryosurgery in nasal passageways and included: pain/discomfort, headache, facial pain, bleeding, dry nose, ear blockage. By day 90, symptoms had either resolved or were rated as mild. The ClariFix device is intended to be used as a cryosurgical tool for the destruction of unwanted tissue during surgical procedures, including in adults with Chronic Rhinitis.

This document is intended solely for the use of healthcare professionals. A surgeon must always rely on his or her own professional clinical judgment when deciding whether to use a particular product when treating a particular patient. We do not dispense medical advice and recommend that surgeons be trained in the use of any particular product before using it in surgery.

The information presented is intended to demonstrate Stryker's products. A surgeon must always refer to the package insert, product label and/or instructions for use, including the instructions for cleaning and sterilization (if applicable), before using any of Stryker's products. Products may not be available in all markets because product availability is subject to the regulatory and/or medical practices in individual markets. Please contact your representative if you have questions about the availability of Stryker's products in your area.

Stryker or its affiliated entities own, use, or have applied for the following trademarks or service marks: Stryker. All other trademarks are trademarks of their respective owners or holders.

The absence of a product, feature, or service name, or logo from this list does not constitute a waiver of Stryker's trademark or other intellectual property rights concerning that name or logo.

4278-146 rA

Copyright © 2019 Stryker

Stryker ENT

3600 Holly Lane North,  
Suite 40  
Plymouth, MN 55447

O 866 620 7615

F 763 463 1599